

Executive Suite

## Laird's Landing

302A Parsons Creek Drive, Fort McMurray, Alberta

Enjoy the peace and privacy of Laird's Landing, the perfect property for when you are in town for business for the short or long term. Laird's Landing is located in the Timberlea area of Fort McMurray and is one of two major housing developments on the north side of Fort McMurray. Downtown Fort McMurray is just minutes away and amenities such as a grocery store, gas station and restaurants are right across the street.

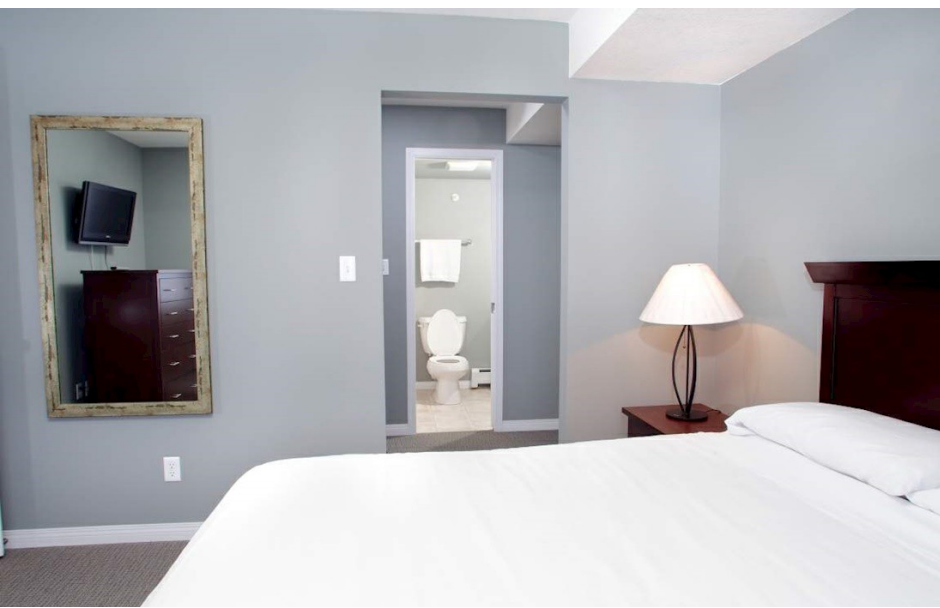
### House Rules

Check In anytime after 3 PM







Check Out by 10 AM

7 night minimum stay

All Premiere Suites are 100%  
smoke free



### Amenities

-  Wifi Internet
-  Workspace
-  Free Local Calling
-  Bi-weekly Housekeeping
-  Parking - On Site
-  Allows Children
- Elevator

### Suites & Reservations

- Two Bedroom

Email: [reserve.canada@premieresuites.com](mailto:reserve.canada@premieresuites.com)

Call Us: 1-888-575-7808

Premiere Suites is Canada's largest and most trusted provider of fully furnished temporary residences, for over 20 years. Where all our properties are private residences, accredited, insured and professionally managed.

© 2021 Premiere Suites